



ALS Canada Ltd.
2103 Dollarton Hwy
North Vancouver BC V7H 0A7
Phone: 604 984 0221 Fax: 604 984 0218 www.alsglobal.com

To: KAMINAK GOLD CORPORATION
1020 - 800 WEST PENDER STREET
VANCOUVER BC V6C 2V6

Page: 1
Finalized Date: 29-MAY-2012
This copy reported on
2-NOV-2012
Account: KAMGOL

CERTIFICATE WH12114791

Project: Coffee

P.O. No.: KGC-12-1245

This report is for 115 Drill Core samples submitted to our lab in Whitehorse, YT, Canada on 22-MAY-2012.

The following have access to data associated with this certificate:

TOM BOKENFOHR

JAMES SCOTT

TIM SMITH

SAMPLE PREPARATION

ALS CODE	DESCRIPTION
LOG-21	Sample logging - ClientBarCode
WEI-21	Received Sample Weight
SPLIT-Z	Pulp split for send out
LOG-23	Pulp Login - Rcvd with Barcode
CRU-QC	Crushing QC Test
CRU-31	Fine crushing - 70% <2mm
PUL-QC	Pulverizing QC Test
SPL-21	Split sample - riffle splitter
PUL-31	Pulverize split to 85% <75 um

ANALYTICAL PROCEDURES

ALS CODE	DESCRIPTION	INSTRUMENT
Au-ICP21	Au 30g FA ICP-AES Finish	ICP-AES
ME-ICP41	35 Element Aqua Regia ICP-AES	ICP-AES

To: KAMINAK GOLD CORPORATION
ATTN: ALS MINERALS

This is the Final Report and supersedes any preliminary report with this certificate number. Results apply to samples as submitted. All pages of this report have been checked and approved for release.

Signature:


Colin Ramshaw, Vancouver Laboratory Manager



ALS Canada Ltd.
2103 Dollarton Hwy
North Vancouver BC V7H 0A7
Phone: 604 984 0221 Fax: 604 984 0218 www.alsglobal.com

To: KAMINAK GOLD CORPORATION
1020 - 800 WEST PENDER STREET
VANCOUVER BC V6C 2V6

Page: 2 - A
Total # Pages: 4 (A - C)
Finalized Date: 29-MAY-2012
Account: KAMGOL

Project: Coffee

CERTIFICATE OF ANALYSIS WH12114791

Sample Description	Method Analyte Units LOR	WEI-21 Recvd Wt. kg	Au-ICP21 Au ppm	ME-ICP41 Ag ppm	ME-ICP41 Al %	ME-ICP41 As ppm	ME-ICP41 B ppm	ME-ICP41 Ba ppm	ME-ICP41 Be ppm	ME-ICP41 Bi ppm	ME-ICP41 Ca %	ME-ICP41 Cd ppm	ME-ICP41 Co ppm	ME-ICP41 Cr ppm	ME-ICP41 Cu ppm	ME-ICP41 Fe %
		0.02	0.001	0.2	0.01	2	10	10	0.5	2	0.01	0.5	1	1	1	0.01
KAM082016		2.19	0.002	<0.2	3.07	52	<10	140	1.0	3	0.48	<0.5	26	25	31	4.51
KAM082017		1.10	0.005	0.2	3.09	116	<10	210	1.1	5	0.30	<0.5	26	20	53	5.96
KAM082018		0.52	0.003	0.2	1.68	325	<10	440	1.6	4	0.25	<0.5	15	11	34	5.91
KAM082019		1.14	0.002	0.2	1.03	559	<10	190	1.6	3	0.38	<0.5	13	5	45	5.69
KAM082020		0.04	0.007	0.4	1.62	8	<10	90	<0.5	3	0.86	<0.5	10	29	24	2.54
KAM082021		0.80	0.002	0.2	1.10	434	<10	90	1.4	4	3.09	<0.5	16	22	22	4.46
KAM082022		1.00	0.017	0.2	0.87	1085	<10	150	1.1	4	1.36	<0.5	16	32	28	3.81
KAM082023		0.87	0.019	0.2	0.64	2280	<10	240	0.9	3	0.13	<0.5	20	16	43	3.85
KAM082024		1.06	0.006	0.2	0.77	706	<10	50	1.0	3	0.11	<0.5	19	29	25	2.84
KAM082025		0.64	0.003	<0.2	1.25	226	<10	70	0.8	2	1.07	<0.5	12	39	12	2.57
KAM082026		1.03	0.003	<0.2	0.97	44	<10	170	0.8	4	1.04	<0.5	13	37	11	2.57
KAM082027		2.31	0.002	0.2	0.75	24	<10	410	0.7	2	2.45	<0.5	10	30	7	2.33
KAM082028		2.43	0.009	0.6	0.73	51	<10	260	0.7	3	2.55	<0.5	12	18	10	2.77
KAM082029		2.29	0.157	0.6	0.58	1195	<10	270	0.7	3	3.07	<0.5	12	12	7	2.64
KAM082030		0.04	2.70	0.7	1.14	12	<10	110	<0.5	2	0.79	<0.5	9	39	39	2.72
KAM082031		2.47	0.005	0.2	1.04	185	<10	480	0.9	3	2.08	<0.5	12	37	12	2.65
KAM082032		2.33	0.003	<0.2	0.79	43	<10	490	0.6	2	1.65	<0.5	9	31	14	2.18
KAM082033		2.63	0.002	0.2	1.63	14	<10	380	0.5	3	1.18	<0.5	15	64	15	3.20
KAM082034		2.55	0.003	0.2	1.25	24	<10	540	0.7	3	1.72	<0.5	12	45	14	3.05
KAM082035		2.26	0.003	0.2	1.59	27	<10	410	1.0	2	1.36	<0.5	14	35	20	3.23
KAM082036		2.06	0.007	0.2	1.74	35	<10	230	0.7	4	1.10	<0.5	12	40	25	3.38
KAM082037		2.24	0.001	0.3	1.37	13	<10	210	0.5	3	3.02	<0.5	10	22	17	2.42
KAM082038		2.42	0.002	0.2	1.47	12	<10	370	0.5	3	2.23	<0.5	12	24	30	3.08
KAM082039		2.24	0.001	0.2	1.54	9	<10	250	<0.5	3	1.20	<0.5	12	58	14	3.00
KAM082040		0.04	0.002	0.4	1.66	5	<10	100	<0.5	4	0.90	<0.5	9	30	24	2.60
KAM082041		2.35	0.002	0.3	1.50	89	<10	350	0.6	3	1.70	<0.5	12	34	7	3.29
KAM082042		2.39	0.001	0.2	1.34	29	<10	230	0.5	3	1.09	<0.5	13	37	26	3.22
KAM082043		2.26	0.003	0.5	1.66	13	<10	170	0.5	2	5.29	<0.5	28	34	42	3.98
KAM082044		2.25	0.002	0.2	1.74	10	<10	320	<0.5	3	1.48	<0.5	13	71	15	3.32
KAM082045		2.51	0.001	0.3	2.02	11	<10	40	0.5	6	1.37	<0.5	26	70	101	5.37
KAM082046		2.41	0.002	0.2	2.02	8	<10	80	0.6	4	1.08	<0.5	21	80	40	4.50
KAM082047		2.03	0.004	0.4	1.12	36	<10	180	0.9	4	3.87	<0.5	22	31	16	3.73
KAM082048		2.32	0.002	0.3	1.29	108	<10	650	1.2	3	2.44	<0.5	16	34	11	3.71
KAM082049		2.09	0.003	0.2	1.51	42	<10	110	0.8	4	1.00	<0.5	16	45	13	3.14
KAM082050		0.04	0.247	0.5	0.18	519	<10	1330	<0.5	3	1.06	0.5	6	18	34	3.33
KAM082051		2.03	0.002	0.2	1.15	52	<10	320	0.7	2	1.76	<0.5	15	29	13	2.91
KAM082052		2.06	0.011	<0.2	0.83	782	<10	80	0.9	<2	1.72	<0.5	15	16	20	3.15
KAM082053		2.22	0.007	<0.2	1.06	91	<10	140	1.1	<2	2.09	<0.5	27	27	23	3.82
KAM082054		2.10	0.025	<0.2	0.89	98	<10	50	0.7	<2	1.92	<0.5	14	14	9	2.05
KAM082055		0.96	0.035	<0.2	1.08	509	<10	120	1.5	<2	0.22	<0.5	24	41	13	5.50



ALS Canada Ltd.
2103 Dollarton Hwy
North Vancouver BC V7H 0A7
Phone: 604 984 0221 Fax: 604 984 0218 www.alsglobal.com

To: KAMINAK GOLD CORPORATION
1020 - 800 WEST PENDER STREET
VANCOUVER BC V6C 2V6

Page: 2 - B
Total # Pages: 4 (A - C)
Finalized Date: 29-MAY-2012
Account: KAMGOL

Project: Coffee

CERTIFICATE OF ANALYSIS WH12114791

Sample Description	Method Analyte Units LOR	ME-ICP41	ME-ICP41	ME-ICP41	ME-ICP41	ME-ICP41	ME-ICP41	ME-ICP41	ME-ICP41	ME-ICP41	ME-ICP41	ME-ICP41	ME-ICP41	ME-ICP41	ME-ICP41
		Ga	Hg	K	La	Mg	Mn	Mo	Na	Ni	P	Pb	S	Sb	Sc
		ppm 10	ppm 1	% 0.01	ppm 10	% 0.01	ppm 5	ppm 1	% 0.01	ppm 1	ppm 10	ppm 2	% 0.01	ppm 2	ppm 1
KAM082016		10	1	0.54	10	2.34	569	<1	0.01	16	390	20	<0.01	7	29
KAM082017		10	1	0.22	10	2.11	1490	<1	0.01	10	590	9	<0.01	20	28
KAM082018		10	<1	0.22	20	0.73	1890	<1	0.01	8	570	12	<0.01	21	14
KAM082019		<10	<1	0.12	10	0.13	917	<1	0.01	10	560	8	<0.01	35	14
KAM082020		10	<1	0.12	<10	0.78	393	2	0.08	21	600	2	0.03	<2	5
KAM082021		<10	<1	0.16	10	0.12	617	<1	0.01	25	600	6	<0.01	28	13
KAM082022		<10	1	0.17	20	0.08	520	<1	0.01	34	300	5	<0.01	25	7
KAM082023		<10	2	0.18	20	0.05	134	1	0.01	34	130	9	<0.01	29	5
KAM082024		<10	<1	0.18	20	0.05	167	<1	0.01	54	250	4	<0.01	13	5
KAM082025		<10	<1	0.27	30	0.37	209	<1	0.04	45	530	3	<0.01	7	5
KAM082026		<10	<1	0.30	30	0.62	285	<1	0.04	39	370	2	0.09	2	5
KAM082027		<10	<1	0.23	20	1.27	307	<1	0.05	30	390	3	0.21	<2	4
KAM082028		<10	<1	0.29	20	1.14	352	<1	0.03	34	250	5	0.92	<2	3
KAM082029		<10	<1	0.25	20	1.31	375	<1	0.02	31	230	5	0.87	2	3
KAM082030		<10	<1	0.09	<10	0.56	397	5	0.07	28	510	7	0.13	<2	4
KAM082031		<10	<1	0.42	30	1.21	404	<1	0.04	34	440	4	0.20	<2	6
KAM082032		<10	<1	0.26	20	0.73	245	<1	0.04	26	370	2	0.09	<2	4
KAM082033		10	<1	0.46	30	1.31	347	<1	0.04	42	360	3	0.37	2	6
KAM082034		<10	<1	0.46	30	1.11	420	<1	0.05	35	370	5	0.12	<2	5
KAM082035		10	<1	0.57	30	1.00	505	<1	0.03	35	510	10	0.17	<2	5
KAM082036		10	<1	0.58	20	0.91	401	<1	0.03	33	520	7	0.03	<2	5
KAM082037		<10	<1	0.38	20	0.73	501	<1	0.03	21	800	9	0.06	<2	3
KAM082038		<10	<1	0.48	20	0.89	502	<1	0.03	26	540	8	0.20	<2	4
KAM082039		10	<1	0.76	30	1.09	324	<1	0.05	42	420	2	0.14	<2	6
KAM082040		10	<1	0.12	<10	0.79	401	2	0.09	22	620	<2	0.03	<2	5
KAM082041		10	<1	0.66	20	1.16	392	<1	0.05	26	650	5	0.38	<2	5
KAM082042		<10	<1	0.75	30	0.93	444	<1	0.04	37	460	5	0.19	<2	5
KAM082043		10	<1	0.69	20	0.99	531	<1	0.03	30	490	7	1.31	<2	4
KAM082044		10	1	0.68	20	1.33	271	1	0.07	36	470	2	0.60	<2	8
KAM082045		10	<1	0.55	20	1.65	285	1	0.06	52	540	<2	2.47	<2	8
KAM082046		10	<1	0.58	30	1.51	238	<1	0.05	41	370	2	1.72	<2	7
KAM082047		<10	<1	0.25	30	1.27	431	<1	0.03	42	410	6	0.59	<2	4
KAM082048		<10	<1	0.27	30	0.93	464	<1	0.02	44	450	10	0.05	<2	5
KAM082049		10	1	0.38	30	0.66	509	<1	0.01	49	410	7	<0.01	<2	5
KAM082050		<10	3	0.07	<10	0.03	44	15	0.03	11	60	15	0.14	26	1
KAM082051		<10	<1	0.30	30	0.50	430	<1	0.02	38	440	7	<0.01	<2	3
KAM082052		<10	<1	0.26	30	0.56	341	1	0.01	36	370	12	0.09	3	4
KAM082053		<10	<1	0.37	30	0.62	507	<1	0.02	38	800	12	0.13	3	5
KAM082054		<10	<1	0.23	20	0.21	399	<1	0.02	33	370	6	0.01	<2	3
KAM082055		<10	<1	0.24	30	0.24	604	<1	0.01	49	480	7	0.01	23	5



ALS Canada Ltd.
 2103 Dollarton Hwy
 North Vancouver BC V7H 0A7
 Phone: 604 984 0221 Fax: 604 984 0218 www.alsglobal.com

To: KAMINAK GOLD CORPORATION
 1020 - 800 WEST PENDER STREET
 VANCOUVER BC V6C 2V6

Page: 2 - C
 Total # Pages: 4 (A - C)
 Finalized Date: 29-MAY-2012
 Account: KAMGOL

Project: Coffee

CERTIFICATE OF ANALYSIS WH12114791

Sample Description	Method Analyte Units LOR	ME-ICP41	ME-ICP41	ME-ICP41	ME-ICP41	ME-ICP41	ME-ICP41	ME-ICP41
		Th	Ti	Ti	U	V	W	Zn
		ppm 20	% 0.01	ppm 10	ppm 10	ppm 1	ppm 10	ppm 2
KAM082016		<20	0.05	<10	<10	131	<10	65
KAM082017		<20	0.02	<10	<10	140	<10	82
KAM082018		<20	<0.01	<10	<10	50	<10	55
KAM082019		<20	<0.01	<10	<10	43	<10	52
KAM082020		<20	0.13	<10	<10	61	20	44
KAM082021		<20	<0.01	<10	<10	50	<10	62
KAM082022		<20	<0.01	<10	<10	32	<10	47
KAM082023		<20	<0.01	<10	<10	17	<10	20
KAM082024		<20	<0.01	<10	<10	25	<10	25
KAM082025		20	0.01	<10	<10	32	<10	25
KAM082026		<20	0.02	<10	<10	31	<10	23
KAM082027		<20	0.01	<10	<10	22	<10	25
KAM082028		<20	0.01	<10	<10	16	<10	23
KAM082029		<20	<0.01	<10	<10	10	<10	24
KAM082030		<20	0.11	<10	<10	53	20	47
KAM082031		<20	0.02	<10	<10	32	<10	28
KAM082032		<20	0.01	<10	<10	22	<10	23
KAM082033		<20	0.04	<10	<10	43	<10	31
KAM082034		<20	0.04	<10	<10	39	<10	39
KAM082035		<20	0.05	<10	<10	40	<10	44
KAM082036		<20	0.06	<10	<10	33	<10	41
KAM082037		<20	0.03	<10	<10	19	<10	26
KAM082038		<20	0.04	<10	<10	20	<10	30
KAM082039		<20	0.09	<10	<10	46	<10	29
KAM082040		<20	0.14	<10	<10	62	20	45
KAM082041		<20	0.07	<10	<10	39	<10	33
KAM082042		<20	0.08	<10	<10	30	<10	37
KAM082043		<20	0.08	<10	<10	28	<10	24
KAM082044		<20	0.09	<10	<10	54	<10	20
KAM082045		<20	0.08	<10	<10	59	<10	26
KAM082046		<20	0.07	<10	<10	56	<10	21
KAM082047		<20	0.01	<10	<10	24	<10	31
KAM082048		<20	0.01	<10	<10	26	<10	28
KAM082049		20	0.03	<10	<10	34	<10	23
KAM082050		<20	0.01	10	<10	11	30	19
KAM082051		<20	0.01	<10	<10	23	<10	30
KAM082052		<20	0.01	<10	<10	16	<10	35
KAM082053		<20	0.01	<10	<10	27	<10	37
KAM082054		<20	<0.01	<10	<10	12	<10	28
KAM082055		<20	0.01	<10	<10	33	<10	59



ALS Canada Ltd.
2103 Dollarton Hwy
North Vancouver BC V7H 0A7
Phone: 604 984 0221 Fax: 604 984 0218 www.alsglobal.com

To: KAMINAK GOLD CORPORATION
1020 - 800 WEST PENDER STREET
VANCOUVER BC V6C 2V6

Page: 3 - A
Total # Pages: 4 (A - C)
Finalized Date: 29-MAY-2012
Account: KAMGOL

Project: Coffee

CERTIFICATE OF ANALYSIS WH12114791

Sample Description	Method Analyte Units LOR	WEI-21 Recvd Wt. kg	Au-ICP21 Au ppm	ME-ICP41 Ag ppm	ME-ICP41 Al %	ME-ICP41 As ppm	ME-ICP41 B ppm	ME-ICP41 Ba ppm	ME-ICP41 Be ppm	ME-ICP41 Bi ppm	ME-ICP41 Ca %	ME-ICP41 Cd ppm	ME-ICP41 Co ppm	ME-ICP41 Cr ppm	ME-ICP41 Cu ppm	ME-ICP41 Fe %
		0.02	0.001	0.2	0.01	2	10	10	0.5	2	0.01	0.5	1	1	1	0.01
KAM082056		0.92	0.014	<0.2	1.23	273	<10	80	1.4	<2	0.72	<0.5	23	42	8	5.18
KAM082057		1.14	0.026	<0.2	1.88	72	<10	140	1.5	<2	1.78	<0.5	38	58	7	5.29
KAM082058		0.89	0.019	<0.2	1.07	195	<10	90	1.4	<2	4.94	<0.5	23	53	3	5.76
KAM082059		1.14	0.002	<0.2	1.23	44	<10	70	1.5	<2	4.25	<0.5	17	97	17	4.43
KAM082060		0.04	0.002	0.2	1.62	4	<10	90	<0.5	2	0.85	<0.5	9	30	24	2.47
KAM082061		1.16	0.045	<0.2	0.69	138	<10	150	0.7	2	4.02	<0.5	12	28	8	2.87
KAM082062		0.66	0.196	<0.2	0.62	586	<10	50	0.8	3	1.52	<0.5	10	23	9	1.95
KAM082063		1.03	0.134	<0.2	0.56	1480	<10	180	0.8	3	0.12	<0.5	16	38	23	4.18
KAM082064		0.70	0.063	<0.2	0.58	708	<10	80	0.7	2	0.07	<0.5	9	19	24	2.64
KAM082065		0.93	0.214	<0.2	0.48	1145	<10	150	0.8	<2	2.06	<0.5	14	12	8	2.99
KAM082066		1.16	0.050	<0.2	0.52	460	<10	810	1.0	2	2.27	<0.5	11	31	6	2.70
KAM082067		1.18	0.019	<0.2	0.83	727	<10	600	1.3	2	5.80	<0.5	19	203	4	4.37
KAM082068		0.94	0.009	<0.2	0.66	277	<10	750	0.7	2	3.74	<0.5	11	25	6	2.15
KAM082069		1.09	0.019	<0.2	0.67	508	<10	50	0.8	2	1.58	<0.5	8	21	1	2.15
KAM082070		0.04	1.040	0.9	1.66	19	<10	130	<0.5	<2	1.00	0.8	9	30	370	3.23
KAM082071		0.59	0.011	<0.2	0.62	346	<10	70	0.6	2	0.16	<0.5	8	23	2	1.52
KAM082072		0.74	0.184	<0.2	0.79	629	<10	100	0.8	2	0.93	<0.5	9	60	1	1.89
KAM082073		1.02	1.240	<0.2	0.47	6300	<10	200	1.2	2	2.98	<0.5	16	25	1	3.10
KAM082074		0.95	0.358	<0.2	0.66	5700	<10	600	1.6	2	3.76	<0.5	17	35	1	3.89
KAM082075		0.79	0.175	<0.2	0.79	4110	<10	170	2.0	<2	0.96	<0.5	19	48	1	4.12
KAM082076		0.87	0.458	<0.2	0.80	7670	10	100	2.1	2	2.18	<0.5	19	42	1	4.10
KAM082077		1.05	0.399	<0.2	0.66	8330	<10	90	1.6	2	0.66	<0.5	11	23	5	3.27
KAM082078		1.14	2.23	<0.2	0.61	>10000	<10	70	1.5	2	3.23	<0.5	21	47	8	5.28
KAM082079		1.09	0.743	<0.2	0.59	4080	<10	60	1.5	<2	3.16	<0.5	14	31	1	3.29
KAM082080		0.04	0.007	0.3	1.65	7	<10	90	<0.5	3	0.86	<0.5	9	30	23	2.52
KAM082081		0.97	0.394	<0.2	0.53	7750	<10	30	0.9	3	1.34	<0.5	11	8	6	2.30
KAM082082		1.25	0.014	<0.2	0.62	6710	10	70	1.2	<2	1.21	<0.5	9	5	1	1.84
KAM082083		1.03	0.024	<0.2	0.60	3410	10	130	1.1	3	1.08	<0.5	5	4	<1	1.25
KAM082084		1.29	0.650	<0.2	0.56	6100	10	130	1.0	2	1.28	<0.5	9	4	1	1.50
KAM082085		1.09	0.052	<0.2	0.54	2710	<10	1350	1.0	3	2.49	<0.5	4	6	<1	1.44
KAM082086		1.10	0.007	<0.2	0.49	483	<10	410	0.6	2	1.76	<0.5	3	2	<1	1.10
KAM082087		1.17	0.015	<0.2	0.54	1635	<10	300	0.7	2	2.57	<0.5	5	9	1	1.50
KAM082088		1.23	0.018	<0.2	0.61	3900	10	240	1.0	2	4.06	<0.5	9	13	4	2.59
KAM082089		0.77	0.004	<0.2	0.67	638	<10	200	0.9	<2	3.70	<0.5	5	4	<1	1.94
KAM082090		0.04	9.51	1.2	1.16	19	<10	50	<0.5	2	0.68	<0.5	10	29	55	3.30
KAM082091		0.83	0.005	<0.2	0.76	348	<10	130	0.7	2	1.35	<0.5	4	4	5	1.27
KAM082092		0.50	0.004	<0.2	0.76	743	<10	130	1.2	<2	4.59	<0.5	8	6	7	2.87
KAM082093		1.23	0.008	<0.2	0.83	95	<10	140	1.0	4	3.21	<0.5	8	38	5	2.28
KAM082094		1.13	0.003	<0.2	1.55	75	<10	150	1.4	7	2.39	<0.5	13	53	8	3.18
KAM082095		2.29	0.003	<0.2	0.79	21	<10	130	0.9	2	2.83	<0.5	5	10	6	1.59



ALS Canada Ltd.
2103 Dollarton Hwy
North Vancouver BC V7H 0A7
Phone: 604 984 0221 Fax: 604 984 0218 www.alsglobal.com

To: KAMINAK GOLD CORPORATION
1020 - 800 WEST PENDER STREET
VANCOUVER BC V6C 2V6

Page: 3 - B
Total # Pages: 4 (A - C)
Finalized Date: 29-MAY-2012
Account: KAMGOL

Project: Coffee

CERTIFICATE OF ANALYSIS WH12114791

Sample Description	Method Analyte Units LOR	ME-ICP41 Ga ppm 10	ME-ICP41 Hg ppm 1	ME-ICP41 K % 0.01	ME-ICP41 La ppm 10	ME-ICP41 Mg % 0.01	ME-ICP41 Mn ppm 5	ME-ICP41 Mo ppm 1	ME-ICP41 Na % 0.01	ME-ICP41 Ni ppm 1	ME-ICP41 P ppm 10	ME-ICP41 Pb ppm 2	ME-ICP41 S % 0.01	ME-ICP41 Sb ppm 2	ME-ICP41 Sc ppm 1	ME-ICP41 Sr ppm 1
KAM082056		<10	<1	0.26	30	0.26	503	<1	0.01	46	470	7	0.01	10	6	28
KAM082057		<10	<1	0.33	30	0.45	916	<1	0.02	57	590	6	0.02	2	8	47
KAM082058		<10	<1	0.36	20	0.55	713	<1	0.02	33	590	8	0.02	13	12	95
KAM082059		<10	<1	0.31	10	1.65	878	1	0.02	33	630	6	0.06	2	12	95
KAM082060		10	1	0.12	<10	0.75	392	5	0.08	23	600	4	0.06	<2	5	43
KAM082061		<10	<1	0.26	20	0.65	530	3	0.01	26	300	6	0.08	<2	5	71
KAM082062		<10	1	0.21	10	0.09	251	3	0.01	33	60	8	0.02	16	4	61
KAM082063		<10	1	0.25	20	0.09	493	3	0.01	57	190	9	0.03	41	3	34
KAM082064		<10	1	0.24	30	0.08	317	3	<0.01	36	110	6	0.02	26	2	43
KAM082065		<10	1	0.30	30	0.08	648	3	0.01	40	110	6	0.02	21	2	75
KAM082066		<10	<1	0.21	40	0.44	351	3	<0.01	71	120	10	0.04	15	2	126
KAM082067		<10	<1	0.19	20	2.19	739	3	0.01	231	190	5	0.04	9	11	423
KAM082068		<10	<1	0.25	40	0.54	334	3	0.01	96	210	6	0.04	7	2	141
KAM082069		<10	1	0.21	40	0.12	297	3	0.01	83	110	6	0.02	16	2	48
KAM082070		10	1	0.20	10	0.77	490	12	0.10	28	670	279	0.13	<2	5	55
KAM082071		<10	<1	0.16	30	0.09	343	2	<0.01	62	70	4	0.01	11	2	30
KAM082072		<10	<1	0.17	30	0.11	406	2	0.01	99	200	7	0.02	17	3	77
KAM082073		<10	1	0.30	20	1.10	638	3	0.01	29	80	12	0.28	8	6	401
KAM082074		<10	1	0.27	10	1.58	626	2	0.01	36	60	15	0.27	8	9	231
KAM082075		<10	1	0.28	20	0.21	650	3	0.01	61	90	15	0.03	27	9	84
KAM082076		<10	1	0.35	10	0.85	751	3	0.01	39	70	19	0.21	13	9	171
KAM082077		<10	2	0.33	10	0.26	231	3	0.01	21	70	14	0.17	12	6	147
KAM082078		<10	1	0.36	20	1.57	767	3	0.02	46	150	20	0.89	13	10	406
KAM082079		<10	2	0.34	20	0.80	495	2	0.01	35	100	15	0.83	13	5	202
KAM082080		10	1	0.12	<10	0.76	398	4	0.08	23	620	2	0.07	<2	5	43
KAM082081		<10	1	0.26	30	0.62	226	3	0.01	15	120	17	1.26	6	4	141
KAM082082		<10	1	0.24	30	0.54	226	3	0.01	13	200	14	1.08	8	3	73
KAM082083		<10	<1	0.24	30	0.46	194	3	0.01	7	170	9	0.25	5	2	69
KAM082084		<10	<1	0.27	30	0.52	223	3	0.01	10	160	13	0.41	5	2	100
KAM082085		<10	1	0.29	40	0.57	327	3	0.01	6	160	14	0.14	4	1	95
KAM082086		<10	<1	0.21	40	0.41	219	3	0.01	6	140	12	0.07	3	1	47
KAM082087		<10	<1	0.30	40	0.61	351	3	0.01	6	270	11	0.04	<2	2	80
KAM082088		<10	1	0.29	40	0.25	560	3	0.01	15	370	17	0.11	15	3	96
KAM082089		<10	<1	0.25	40	0.10	543	2	0.01	9	360	11	0.02	19	1	56
KAM082090		<10	3	0.19	10	0.58	351	869	0.09	28	420	9	1.39	29	4	55
KAM082091		<10	<1	0.23	30	0.07	414	3	0.01	9	270	10	0.02	13	1	39
KAM082092		<10	<1	0.23	30	0.15	673	3	0.01	27	440	10	0.02	23	2	35
KAM082093		<10	1	0.22	30	0.29	300	4	0.02	32	300	9	0.09	2	4	47
KAM082094		10	1	0.60	40	1.10	404	4	0.03	57	440	11	0.22	<2	7	68
KAM082095		<10	1	0.24	30	1.01	339	3	0.01	13	200	8	0.15	<2	2	63



ALS Canada Ltd.
 2103 Dollarton Hwy
 North Vancouver BC V7H 0A7
 Phone: 604 984 0221 Fax: 604 984 0218 www.alsglobal.com

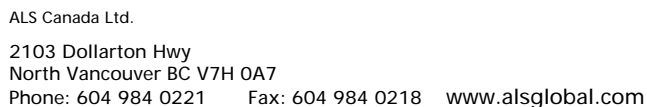
To: KAMINAK GOLD CORPORATION
 1020 - 800 WEST PENDER STREET
 VANCOUVER BC V6C 2V6

Page: 3 - C
 Total # Pages: 4 (A - C)
 Finalized Date: 29-MAY-2012
 Account: KAMGOL

Project: Coffee

CERTIFICATE OF ANALYSIS WH12114791

Sample Description	Method Analyte Units LOR	ME-ICP41	ME-ICP41	ME-ICP41	ME-ICP41	ME-ICP41	ME-ICP41	ME-ICP41
		Th	Ti	Ti	U	V	W	Zn
		ppm	%	ppm	ppm	ppm	ppm	ppm
		20	0.01	10	10	1	10	2
KAM082056		<20	<0.01	<10	<10	33	<10	61
KAM082057		<20	0.01	<10	<10	50	<10	95
KAM082058		<20	<0.01	<10	<10	40	<10	76
KAM082059		<20	0.01	<10	<10	73	<10	71
KAM082060		<20	0.14	<10	<10	61	10	44
KAM082061		<20	<0.01	<10	<10	19	<10	44
KAM082062		<20	<0.01	<10	<10	15	<10	23
KAM082063		<20	<0.01	<10	<10	17	10	35
KAM082064		20	<0.01	<10	<10	11	10	20
KAM082065		<20	<0.01	<10	<10	11	<10	24
KAM082066		20	<0.01	<10	<10	11	<10	24
KAM082067		<20	<0.01	<10	<10	34	<10	65
KAM082068		20	<0.01	<10	<10	9	<10	31
KAM082069		30	<0.01	<10	<10	8	<10	29
KAM082070		<20	0.14	<10	<10	66	10	209
KAM082071		30	<0.01	<10	<10	6	10	24
KAM082072		20	<0.01	<10	<10	14	10	36
KAM082073		<20	<0.01	<10	<10	12	<10	33
KAM082074		<20	<0.01	<10	<10	25	<10	24
KAM082075		<20	<0.01	<10	<10	30	10	61
KAM082076		<20	<0.01	<10	<10	27	<10	31
KAM082077		<20	<0.01	<10	<10	15	<10	37
KAM082078		<20	<0.01	<10	<10	20	<10	51
KAM082079		<20	<0.01	<10	<10	16	<10	53
KAM082080		<20	0.14	<10	<10	62	20	45
KAM082081		20	<0.01	<10	<10	6	<10	17
KAM082082		20	<0.01	<10	<10	4	<10	17
KAM082083		20	<0.01	<10	<10	4	<10	21
KAM082084		20	<0.01	<10	<10	4	<10	21
KAM082085		30	<0.01	<10	<10	4	<10	29
KAM082086		30	<0.01	<10	<10	3	<10	14
KAM082087		30	<0.01	<10	<10	4	<10	28
KAM082088		20	<0.01	<10	<10	10	<10	43
KAM082089		20	<0.01	<10	<10	8	10	24
KAM082090		<20	0.09	<10	<10	55	20	54
KAM082091		20	<0.01	<10	<10	6	10	16
KAM082092		<20	<0.01	<10	<10	15	10	35
KAM082093		20	0.01	<10	<10	28	<10	35
KAM082094		20	0.05	<10	<10	44	<10	45
KAM082095		20	0.01	<10	<10	11	<10	24



Page: 4 - A
Total # Pages: 4 (A - C)
Finalized Date: 29-MAY-2012
Account: KAMGOL

CERTIFICATE OF ANALYSIS WH12114791

Sample Description	Method Analyte Units LOR	WEI-21	Au-ICP21	ME-ICP41	ME-ICP41	ME-ICP41	ME-ICP41	ME-ICP41	ME-ICP41	ME-ICP41	ME-ICP41	ME-ICP41	ME-ICP41	ME-ICP41	ME-ICP41	ME-ICP41
		Recvd Wt.	Au	Ag	Al	As	B	Ba	Be	Bi	Ca	Cd	Co	Cr	Cu	Fe
		kg	ppm	ppm	%	ppm	ppm	ppm	ppm	ppm	%	ppm	ppm	ppm	ppm	%
		0.02	0.001	0.2	0.01	2	10	10	0.5	2	0.01	0.5	1	1	1	0.01
KAM082096		2.27	0.001	<0.2	0.69	13	<10	80	0.7	<2	1.99	<0.5	5	5	4	1.13
KAM082097		2.33	0.001	<0.2	1.03	30	<10	220	1.0	<2	5.24	<0.5	15	54	15	2.74
KAM082098		2.42	0.006	<0.2	0.88	37	<10	180	0.8	<2	4.25	<0.5	11	56	9	2.30
KAM082099		2.25	0.001	<0.2	1.19	21	<10	260	1.0	<2	2.60	<0.5	10	32	4	2.25
KAM082100		0.04	0.002	0.2	1.60	3	<10	90	<0.5	<2	0.84	<0.5	10	29	24	2.48
KAM082101		2.21	0.001	<0.2	0.74	10	<10	210	0.6	<2	2.21	<0.5	7	20	3	1.53
KAM082102		2.25	0.001	0.2	0.78	18	<10	40	0.7	<2	2.19	<0.5	6	4	4	1.27
KAM082103		2.20	0.002	<0.2	0.75	15	<10	60	0.7	<2	1.34	<0.5	6	6	3	1.44
KAM082104		2.14	0.001	<0.2	0.40	7	<10	120	0.5	<2	1.46	<0.5	3	7	6	0.93
KAM082105		2.37	0.002	<0.2	0.46	6	<10	110	0.6	<2	2.07	<0.5	5	8	4	1.23
KAM082106		2.34	0.003	<0.2	1.73	22	<10	120	1.1	<2	1.95	<0.5	11	70	8	2.59
KAM082107		2.35	0.010	<0.2	1.13	63	<10	170	0.7	<2	1.00	<0.5	7	12	4	1.89
KAM082108		1.94	0.006	<0.2	0.56	60	<10	40	0.5	<2	0.91	<0.5	4	6	2	1.01
KAM082109		1.38	0.004	<0.2	1.27	196	<10	50	1.2	<2	0.24	<0.5	7	8	7	2.04
KAM082110		0.04	2.01	0.4	1.92	7	<10	120	<0.5	<2	0.99	<0.5	12	33	35	3.13
KAM082111		1.96	0.008	<0.2	0.60	92	<10	40	0.5	<2	0.72	<0.5	3	3	4	0.80
KAM082112		2.13	0.011	<0.2	1.71	52	<10	110	1.1	<2	4.30	0.5	16	49	3	2.87
KAM082113		1.56	0.004	<0.2	1.75	43	<10	90	1.3	<2	1.14	<0.5	10	41	5	1.91
KAM082114		0.84	0.010	<0.2	1.06	180	<10	60	1.1	<2	1.74	<0.5	4	17	9	1.39
KAM082115		1.07	0.016	<0.2	0.77	230	<10	90	1.7	<2	1.50	<0.5	4	6	7	1.49
KAM082116		0.72	0.011	<0.2	0.58	85	<10	30	0.9	<2	0.85	<0.5	4	5	4	0.84
KAM082117		0.78	0.010	0.2	0.64	73	<10	40	0.7	<2	1.99	0.6	4	3	8	0.74
KAM082118		0.80	0.011	0.2	0.58	89	<10	60	0.9	<2	1.89	1.7	4	2	7	0.88
KAM082119		1.01	0.002	0.2	0.73	23	<10	20	0.9	<2	1.67	0.5	3	2	11	0.99
KAM082120		0.04	0.003	0.2	1.64	4	<10	90	<0.5	<2	0.87	<0.5	11	30	24	2.5



2103 Dollarton Hwy
North Vancouver BC V7H 0A7

Phone: 604 984 0221 Fax: 604 984 0218 www.alsglobal.com

To: KAMINAK GOLD CORPORATION
1020 - 800 WEST PENDER STREET
VANCOUVER BC V6C 2V6

Page: 4 - B
Total # Pages: 4 (A - C)
Finalized Date: 29-MAY-2012
Account: KAMGOL

Project: Coffee

CERTIFICATE OF ANALYSIS WH12114791

Sample Description	Method Analyte Units LOR	ME-ICP41	ME-ICP41	ME-ICP41	ME-ICP41	ME-ICP41	ME-ICP41	ME-ICP41	ME-ICP41	ME-ICP41	ME-ICP41	ME-ICP41	ME-ICP41	ME-ICP41	ME-ICP41	
		Ga	Hg	K	La	Mg	Mn	Mo	Na	Ni	P	Pb	S	Sb	Sc	Sr
		ppm 10	ppm 1	% 0.01	ppm 10	% 0.01	ppm 5	ppm 1	% 0.01	ppm 1	ppm 10	ppm 2	% 0.01	ppm 2	ppm 1	ppm 1
KAM082096		<10	<1	0.30	40	0.73	248	2	0.02	7	240	7	0.06	<2	1	46
KAM082097		<10	<1	0.31	30	2.14	746	2	0.02	28	540	14	0.21	<2	7	115
KAM082098		<10	<1	0.28	30	1.53	581	1	0.02	26	440	9	0.11	<2	6	90
KAM082099		<10	<1	0.59	40	1.24	502	<1	0.04	12	490	4	0.13	<2	6	78
KAM082100		10	<1	0.12	<10	0.74	400	2	0.08	22	600	2	0.05	<2	5	41
KAM082101		<10	<1	0.29	30	0.75	362	<1	0.04	5	440	5	0.13	<2	3	65
KAM082102		<10	<1	0.22	30	0.69	283	1	0.02	4	340	11	0.14	<2	2	43
KAM082103		<10	<1	0.25	30	0.40	198	2	0.06	3	330	6	0.12	<2	2	31
KAM082104		<10	<1	0.18	20	0.44	200	1	0.06	1	110	7	0.09	<2	1	36
KAM082105		<10	<1	0.20	30	0.66	255	2	0.06	2	210	9	0.20	<2	1	58
KAM082106		10	<1	0.81	30	1.28	467	<1	0.05	8	640	6	0.08	<2	6	56
KAM082107		10	<1	0.34	30	0.54	245	<1	0.05	2	460	7	0.01	<2	3	37
KAM082108		<10	<1	0.17	30	0.13	115	<1	0.07	2	120	7	0.01	6	1	16
KAM082109		<10	<1	0.26	30	0.40	218	<1	0.02	5	450	10	<0.01	21	4	16
KAM082110		10	<1	0.16	<10	0.87	485	3	0.12	25	650	7	0.05	2	6	50
KAM082111		<10	<1	0.09	20	0.07	104	1	0.03	1	80	29	0.01	7	1	12
KAM082112		10	<1	0.72	20	0.95	517	1	0.04	34	370	26	0.03	4	6	92
KAM082113		10	<1	0.56	30	0.75	264	1	0.03	19	360	9	0.01	5	4	32
KAM082114		<10	<1	0.25	60	0.23	217	<1	0.01	8	230	8	0.01	14	3	20
KAM082115		<10	<1	0.10	50	0.10	433	1	0.01	5	160	12	0.01	18	3	15
KAM082116		<10	<1	0.11	30	0.04	137	1	0.01	1	80	9	0.01	5	1	13
KAM082117		<10	<1	0.11	40	0.05	211	1	0.01	1	90	20	0.01	5	1	47
KAM082118		<10	<1	0.11	30	0.06	322	1	0.01	1	90	41	0.01	6	1	44
KAM082119		<10	<1	0.09	30	0.12	147	1	0.01	2	90	34	0.01	2	1	42
KAM082120		10	<1	0.12	<10	0.76	410	2	0.09	22	610	2	0.05	<2	5	42
KAM082121		10	<1	0.20	40	1.07	465	<1	0.01	32	410	10	0.01	3	7	111
KAM082122		10	<1	0.35	30	1.20	392	<1	0.02	38	410	6	0.01	4	6	51
KAM082123		10	<1	0.67	30	1.67	397	1	0.01	45	460	5	0.24	5	6	37
KAM082124		10	<1	0.96	30	1.54	331	<1	0.01	45	530	2	0.01	3	7	16
KAM082125		10	1	0.50	20	0.87	190	1	0.01	25	550	5	0.02	41	6	26
KAM082126		<10	3	0.27	30	0.14	119	3	0.01	12	290	16	0.17	227	5	147
KAM082127		10	<1	0.29	20	1.56	294	<1	0.01	48	340	9	0.01	14	6	18
KAM082128		10	<1	0.38	30	1.53	421	<1	0.01	41	400	22	0.01	5	4	20
KAM082129		10	<1	0.65	30	1.40	344	<1	0.03	45	400	3	0.01	3	5	20
KAM082130		<10	3	0.20	10	0.60	364	873	0.08	26	420	9	1.39	29	4	54



ALS Canada Ltd.
 2103 Dollarton Hwy
 North Vancouver BC V7H 0A7
 Phone: 604 984 0221 Fax: 604 984 0218 www.alsglobal.com

To: KAMINAK GOLD CORPORATION
 1020 - 800 WEST PENDER STREET
 VANCOUVER BC V6C 2V6

Page: 4 - C
 Total # Pages: 4 (A - C)
 Finalized Date: 29-MAY-2012
 Account: KAMGOL

Project: Coffee

CERTIFICATE OF ANALYSIS WH12114791

Sample Description	Method Analyte Units LOR	ME-ICP41	ME-ICP41	ME-ICP41	ME-ICP41	ME-ICP41	ME-ICP41
		Th	Ti	Ti	U	V	Zn
		ppm	%	ppm	ppm	ppm	ppm
		20	0.01	10	10	1	2
KAM082096		30	<0.01	<10	<10	6	<10
KAM082097		20	0.01	<10	<10	43	<10
KAM082098		20	0.01	<10	<10	32	<10
KAM082099		20	0.04	<10	<10	39	<10
KAM082100		<20	0.13	<10	<10	61	20
KAM082101		20	0.01	<10	<10	14	<10
KAM082102		20	<0.01	<10	<10	8	<10
KAM082103		20	0.01	<10	<10	12	<10
KAM082104		20	<0.01	<10	<10	4	<10
KAM082105		30	<0.01	<10	<10	6	<10
KAM082106		20	0.06	<10	<10	42	<10
KAM082107		20	0.02	<10	<10	17	<10
KAM082108		30	<0.01	<10	<10	5	<10
KAM082109		20	0.01	<10	<10	16	<10
KAM082110		<20	0.16	<10	<10	73	20
KAM082111		30	<0.01	<10	<10	3	<10
KAM082112		20	0.04	<10	<10	37	<10
KAM082113		30	0.03	<10	<10	22	<10
KAM082114		30	0.01	<10	<10	12	<10
KAM082115		20	<0.01	<10	<10	10	<10
KAM082116		20	<0.01	<10	<10	6	<10
KAM082117		30	<0.01	<10	<10	5	<10
KAM082118		30	<0.01	<10	<10	5	<10
KAM082119		30	<0.01	<10	<10	7	<10
KAM082120		<20	0.14	<10	<10	62	20
KAM082121		20	0.01	<10	<10	37	<10
KAM082122		<20	0.02	<10	<10	42	<10
KAM082123		<20	0.05	<10	<10	52	<10
KAM082124		<20	0.11	<10	<10	60	<10
KAM082125		<20	0.05	<10	<10	42	<10
KAM082126		<20	0.01	<10	<10	27	<10
KAM082127		20	0.02	<10	<10	49	<10
KAM082128		<20	0.03	<10	<10	39	<10
KAM082129		20	0.07	<10	<10	40	<10
KAM082130		<20	0.09	<10	<10	54	20